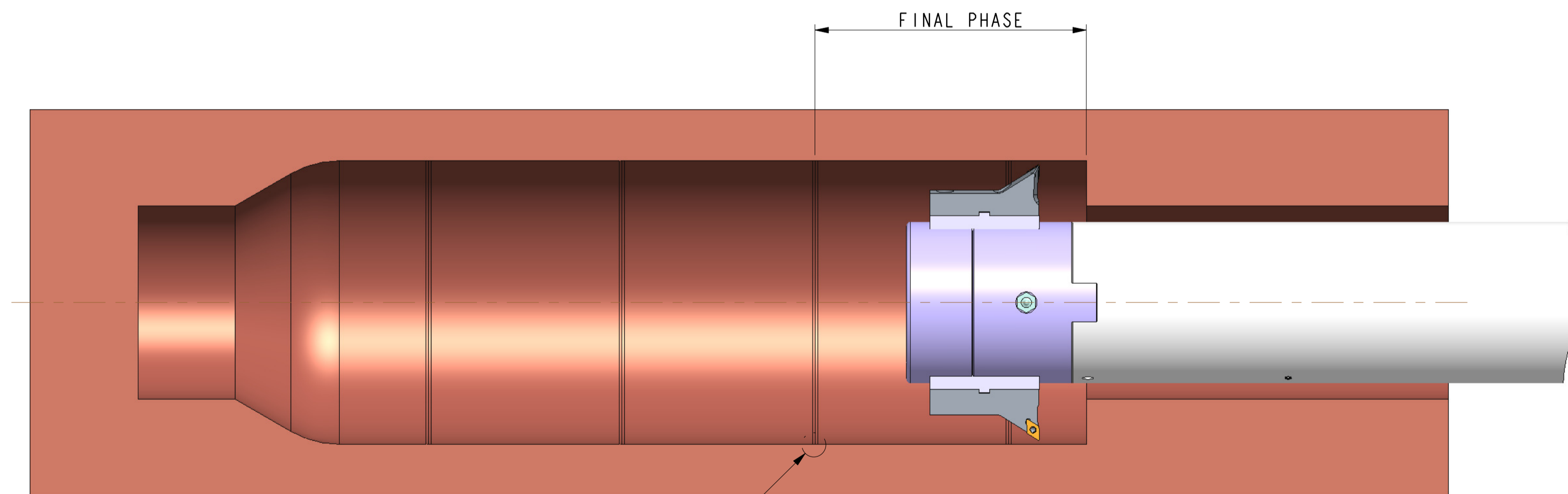
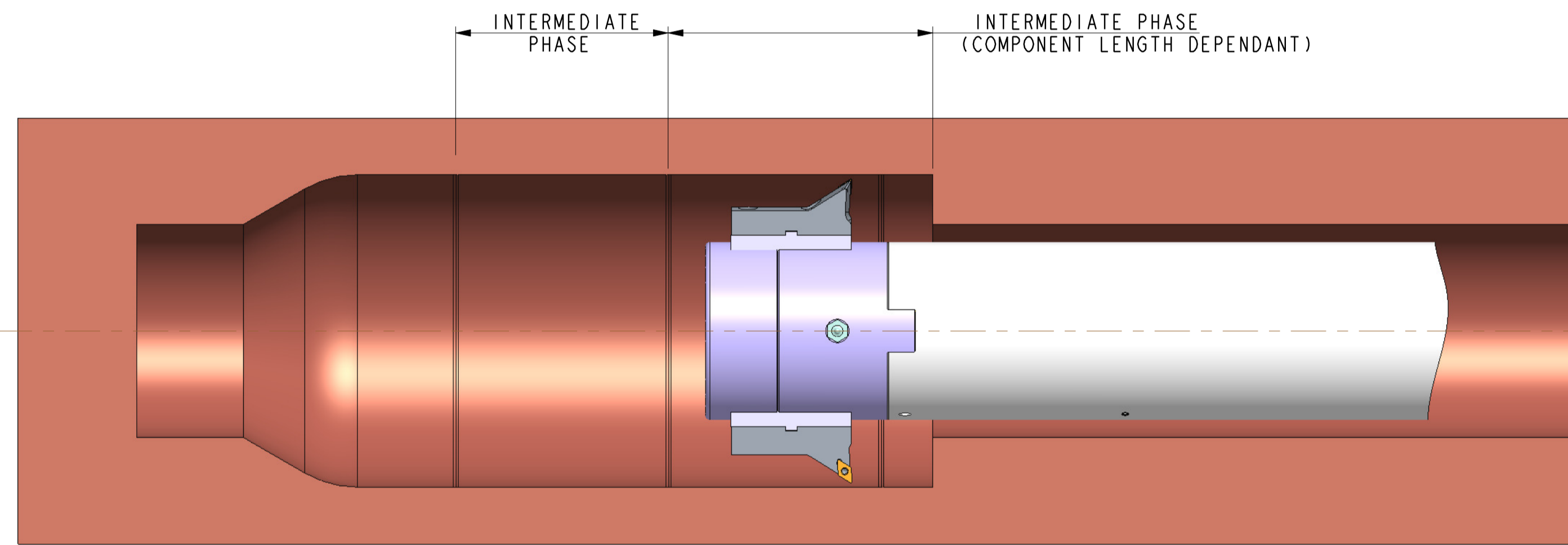
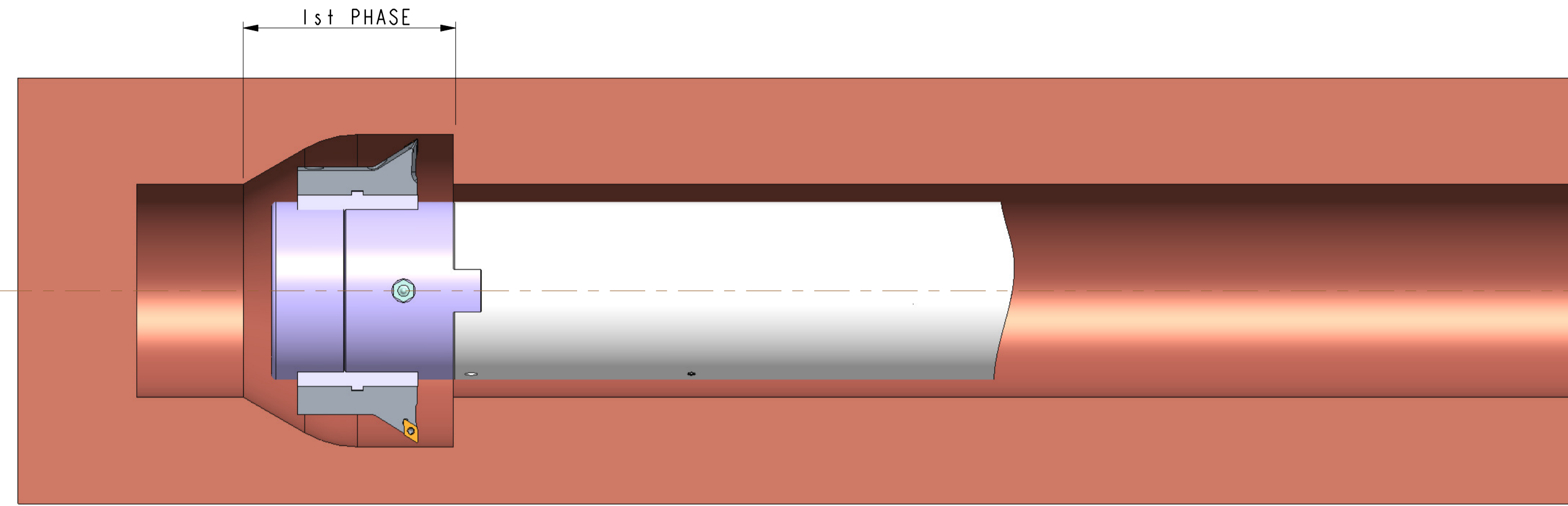


DO NOT SCALE IF IN DOUBT- ASK!!

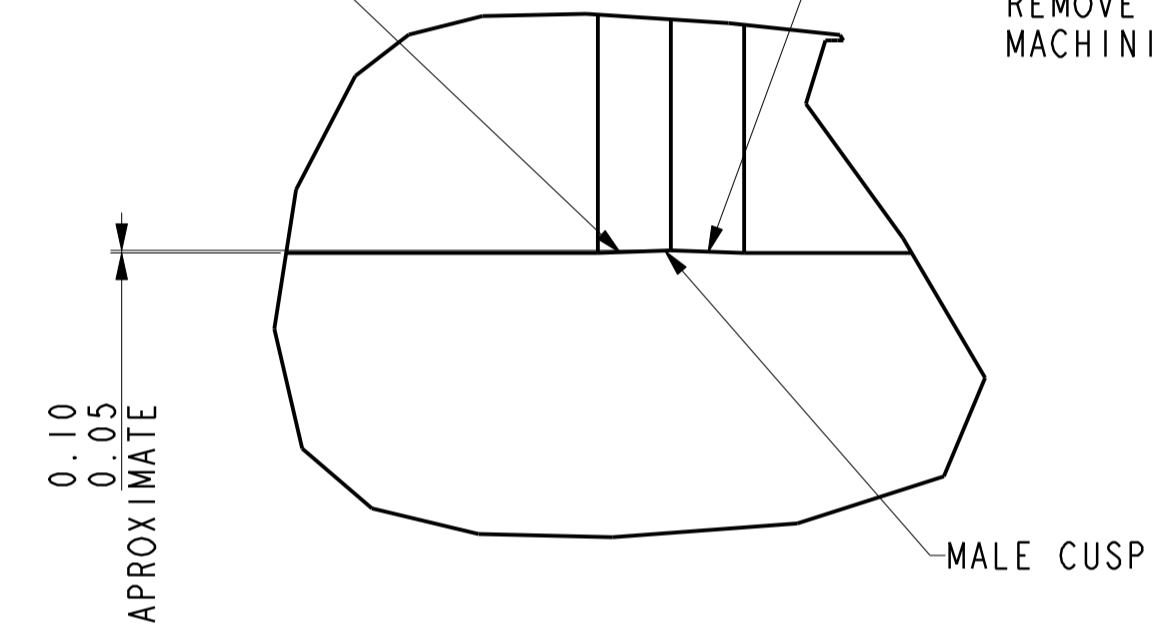
THIRD ANGLE



SEE DETAIL A

FINAL PASS OF MACHINING PHASE 1 & INTERMEDIATE PHASES PROGRAMED TO PRODUCE RADIUS TO REMOVE POTENTIAL MIS-MATCH BETWEEN MACHINING PHASES

FINAL PASS OF MACHINING INTERMEDIATE PHASE & FINAL PHASE PROGRAMED TO PRODUCE RADIUS TO REMOVE POTENTIAL MIS-MATCH BETWEEN MACHINING PHASES



DETAIL A
SCALE 5:1

PHASED MACHINING TECHNIQUES

CREO AI

REV NO.	DOC. NO.	SIGN & DATE
1		
2		
3		
4		
5		
6		
7		
8		

NOTES:

UNLESS OTHERWISE STATED

- ALL DIMENSIONS IN MILLIMETRES
- DRAWING STANDARD TO BS308
PART 1 : PART 2 : PART 3
- ALL UNTOLERANCED DIAMETERS/LENGTHS
DECIMAL XX, ±1mm
XX,X ±,25mm
XX,XX ±,03mm
- SURFACE FINISH SYMBOLS TO BS 1134
- WELDING SYMBOLS TO BS 499

- ANGULAR TOLERANCE
ANGLE XX° ±0° 30'
- BREAK ALL SHARP CORNERS
0,3 MAX 'M
- FEATURES TO BE WITHIN 10% OF FORM
- SURFACE FINISH 3,2UM UNLESS STATED
- THREAD CLASS OF FIT 6H6G INTERNAL
6h6g EXTERNAL

THIS DRAWING & ALL INFORMATION CONTAINED HEREIN IS CONFIDENTIAL & PROPRIETARY TO FTV PROCLAD (UK) LTD & MUST NOT BE DISCLOSED TO ANY PERSON OR COMPANY WITHOUT WRITTEN CONSENT

PROJECT: ***

CHECKED BY: -

SCALE. 333:1000

DRAWN BY: -

SHEET. 1 OF 1

TITLE: PHASED BOTTLE BORING

REF. CREO

DATE. 14.12.17

MATL. N/A

INNOVATIVE TOOLING SOLUTIONS
EMAIL: sales@itstooling.com
WEB: www.itstooling.com

DRAWING NO. BOTTLE BORING